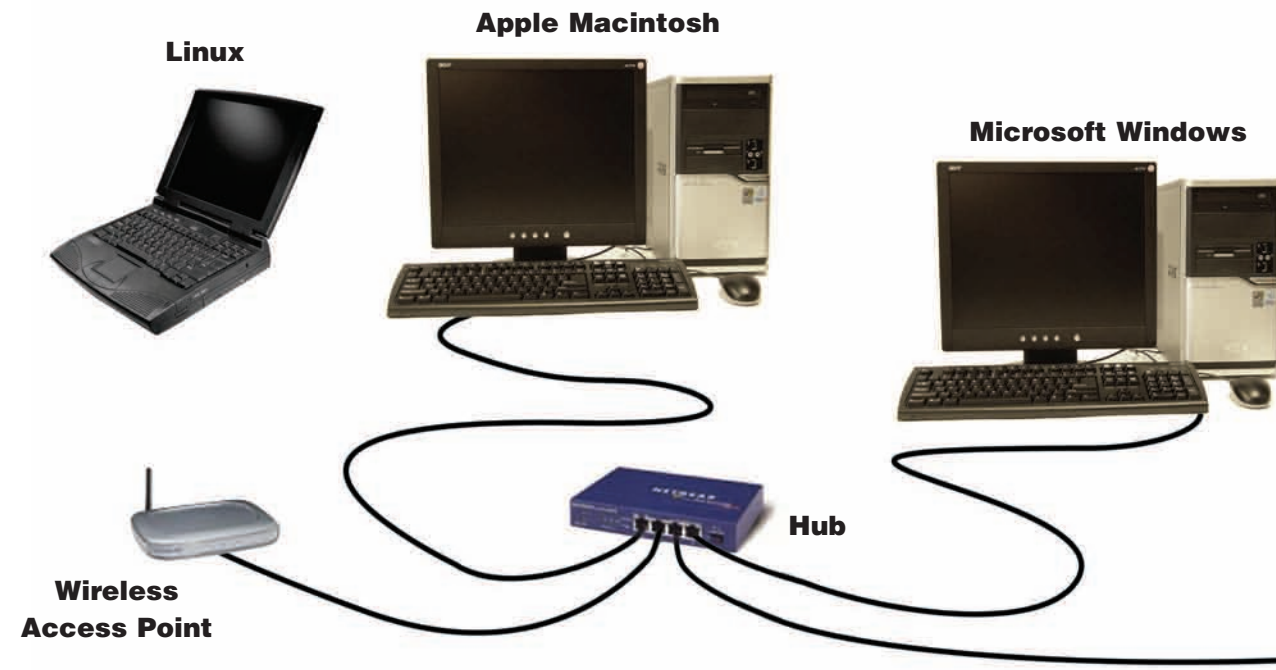


Erie Strayer Company has been providing controls for concrete batch plants since 1950 and were pioneers in the development of computer controls in the early 1970's. Before Personal Computers (PC's) were introduced in the 1980's, hundreds of ERIE batch plants were being driven by IBM Series I computers (considered mid-range IBM

Systems today) with software that was developed by ERIE Engineers and programmers in conjunction with IBM personnel. Today the Sentry Control System has been re-engineered and ported to LINUX, a true multi-tasking real-time operating system, and is again poised to supply customers with the functionality required in the next millennium.

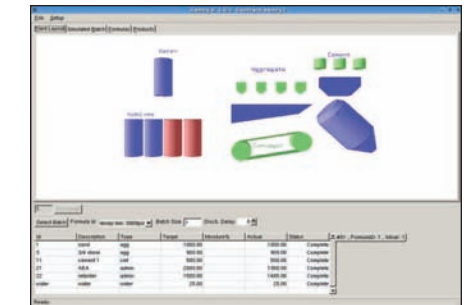
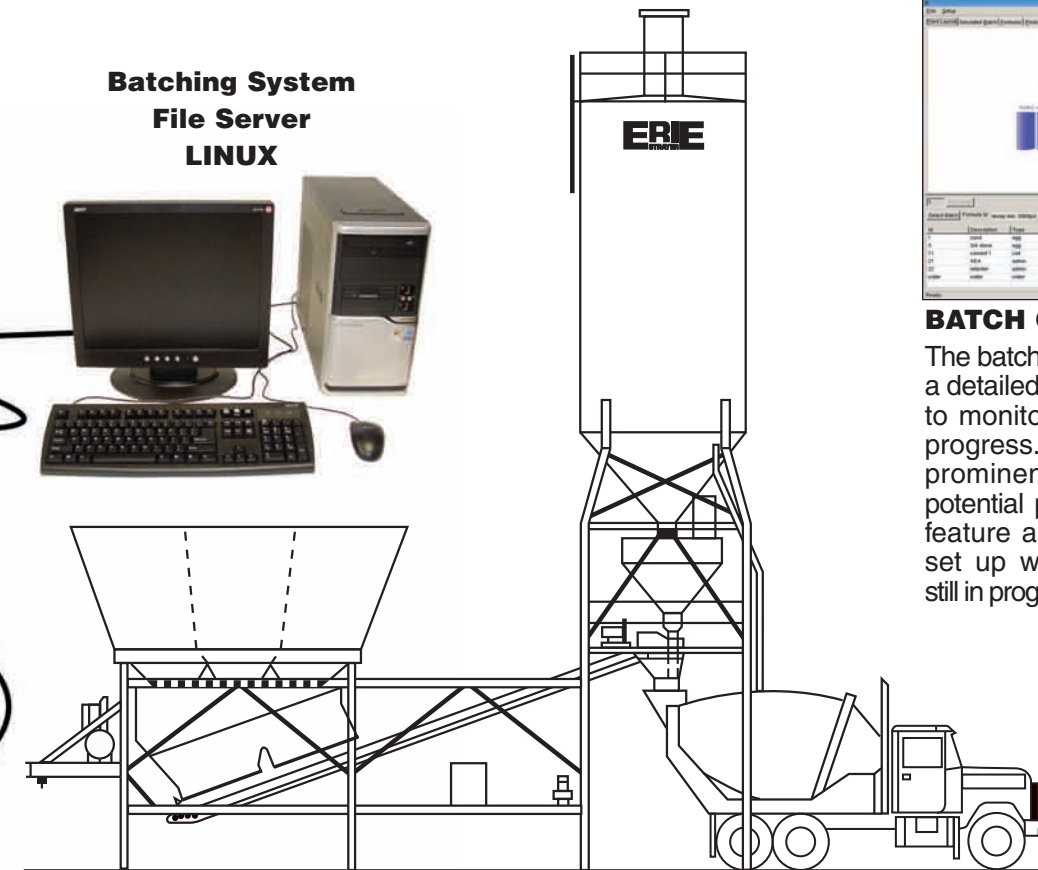
Use a **WEB Browser** to communicate with the **BATCHING** computer.

Erie Sentry Control System can utilize a **WEB BROWSER (NETSCAPE, WINDOWS EXPLORER, etc.)** from anywhere on the network to access and update Customers, Jobs, Tickets, Trucks, and Formulas, etc. in the database. Using the X-Window interface to the LINUX Operating System, any computer on the network can communicate with the batching computer.

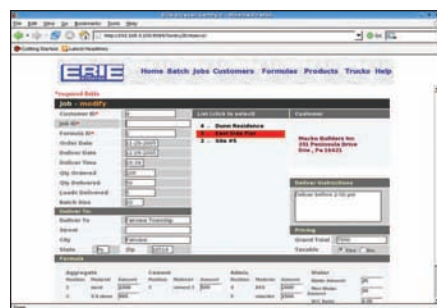


SINGLE SOURCE SERVICE

Sentry Control System software was developed and is supported by the Erie Strayer Company. Installation service and operator training are available for fast startup (over 100 man years in current service department). Factory service kits and trouble shooting aids are included with each system. With the release of the LINUX version a Maintenance Agreement is available for bug fixes, enhancements, and new releases.



BATCH CYCLE
The batching control screen provides a detailed view for the plant operator to monitor and control the load in progress. Warnings and alerts are prominently displayed to signal potential problems. The split screen feature allows the next load to be set up while the current batch is still in progress maximizing throughput.



ORDER ENTRY
Order entry terminals with job stacking can be added to separate order taking from the batching process. The job stacking capability provides flexibility and efficient plant utilization resulting in greater customer satisfaction.



INVENTORY CONTROL
All batching materials are tracked and the usage tables are automatically updated with target amounts, actual amounts, and batching variances. The Sentry Control System maintains a complete product inventory system, allowing the batch operator to include and price miscellaneous items on the delivery ticket. All material shipments and receipts are logged, providing a complete record of product usage, and current on-hand balances.



ON-SCREEN HELP
Sentry Control System on-line help provides an instant reference on the use and operation of all system functions. Brief, concise explanations in easy to understand language aid both the beginner and experienced operator. SENTRY'S "CONTEXT-SENSITIVE" help system is both a learning tool and an on-line assistant.

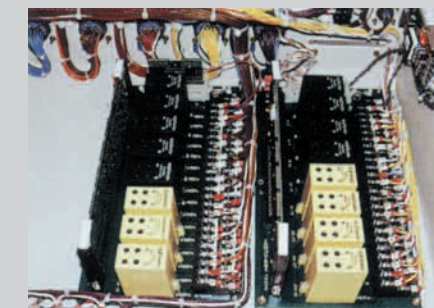
Automatic or Manual Communication to Batch Plant

In the event of a computer failure, the batchman can continue batching manually through ERIE's combination panel.



CONTROL PANEL

The combination Manual Panel and Interface controls all functions of the batch plant. In the event of computer failure, the batchman can continue to batch concrete while repairs are being made.



I/O MODULES

Red LED lights on the input and output modules indicate the condition of the batch plant at any time providing instant monitoring and an effective aid in troubleshooting.



DIGITAL INDICATORS

Digital weighing indicators provide the interface between the load cell scales and the computer. Mounted in a separate enclosure, the units can be maintained independently in the event of a computer failure.



SENTRY II BATCHING CONTROL SYSTEM FEATURES

Plant Control

- LINUX operating system
- Pop-up menus and window displays
- 4 of 4 aggregates
- 2 of 3 cements
- 4 of 7 admixtures
- Water by meter
- Unlimited formula files
- Unlimited customer files
- Unlimited job files
- Truck file with unlimited storage for vehicle identifications, driver names, and discharge specifications
- Weighing by load cell/digital indicator interface
- Moisture compensation on all aggregates; automatic adjustment of water for moisture and high volume admixtures
- Material usage and perpetual inventory control for loads batched in "AUTO"; system maintains actual and target batching amounts (with daily and monthly totals), beginning balance, quantity received, quantity shipped, and balance on hand for all materials
- Automatic preliminary cutoff with freefall compensation for predictive weighing
- All interlocks required by CPMB
- Automatic inching discharge controls; adjustable discharge rates for each truck or mixer; ribbon discharge for proper blending of all materials; continuous discharge compensation accurate for any size batch or formula
- Bin mapping feature: materials can be swapped from one bin to another without changing mix designs
- Split batch feature divides the load into two or more smaller batches when the truck size exceeds the plant capacity
- Water trim and admixture dosage adjustments to meet individual customer and job requirements without altering the basic mix design
- Next batch setup with split screen entry to ensure fast loading of trucks
- Plant Setup function tailors the control system to the individual requirements of the batching plant
- Delivery ticket printing, with sold to, deliver to, and pricing information
- Simulation mode
- Help mode
- System diagnostics

Optional Features

- Additional materials up to:
 - 6 of 8 aggregates
 - 3 of 6 cements
 - 5 of 14 admixtures
 - Water by meter (w/holding tank)
 - Water by batcher
 - Ice by batcher
- Mixer controls – provide interlock for mixing time, tilting time, home and tilt positions for one or two mixers
- Additional controls – Telescopic chute, two-way discharge chute, concrete holding hopper
- **Hydronix Hydro Probe II** for automatic compensation of moisture in sand and stone (up to 16 probes)
- Controls for slurry with automatic compensation for fines, cement, and water
- Additional terminals for job entry and load scheduling
- Universal link to **Command Alkon** dispatch system
- Host communications, for transfer of batching data to **Office Accounting** systems, **QuickBooks Interface**
- Interface to **Truck Tracking** system



SCOUT BATCHING CONTROL SYSTEM An Economical Alternative

The SCOUT Control System offers an economical alternative to the SENTRY controls. Combining basic batching controls with a streamlined design, the SCOUT will exceed your expectations of what a low cost batching system can be.

The SCOUT is intended for use in dry batch ready mix operations where more sophisticated features found in the SENTRY are not required. Digital recordation is available.

A SENTRY upgrade package is available to allow the use of Order Entry, Dispatching, and various Communications functions.

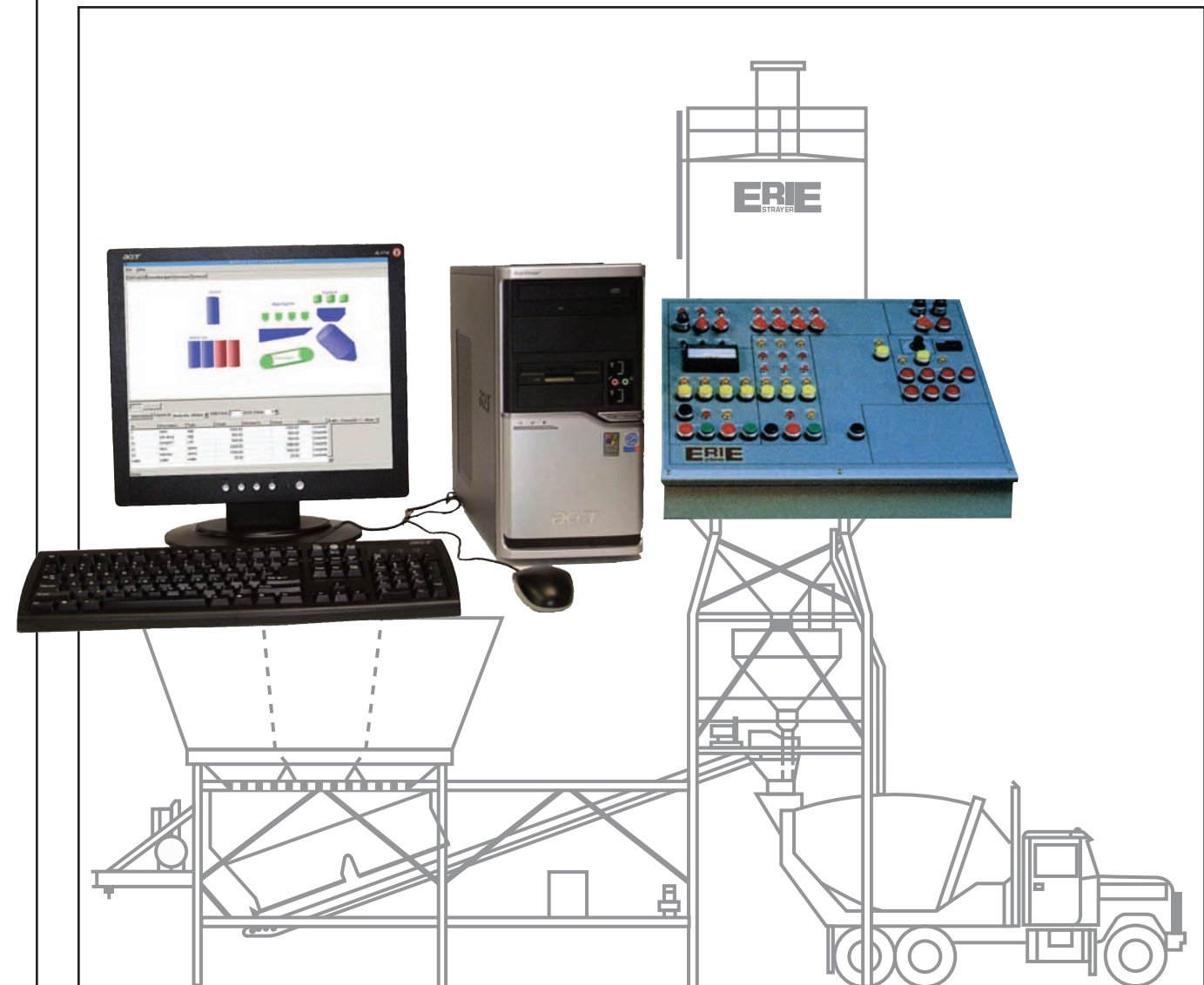


ERIE STRAYER COMPANY
P.O. BOX 1031 ERIE, PA 16512
1851 RUDOLPH AVE ERIE, PA 16502

814-456-7001 PHONE
814-452-3422 FAX
www.eriestrayer.com
email: sales@eriestrayer.com

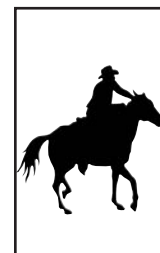


SENTRY II / SCOUT BATCHING CONTROL SYSTEM



SENTRY II

**FAST, ACCURATE,
RELIABLE BATCHING
CONTROL SYSTEMS**



SCOUT